

It is also a good idea to place a favourite bed or blanket into the crate to make things more familiar to them.

A crate is also a fantastic place for your dog to feel safe particularly if they develop a noise phobia. Having somewhere to hide during the firework season or during a thunder storm can really help to make your dog feel safe and secure and help them cope with these events.

Be consistent and patient in doing these things. Allow your dog to become acclimated to their crate at their own pace.

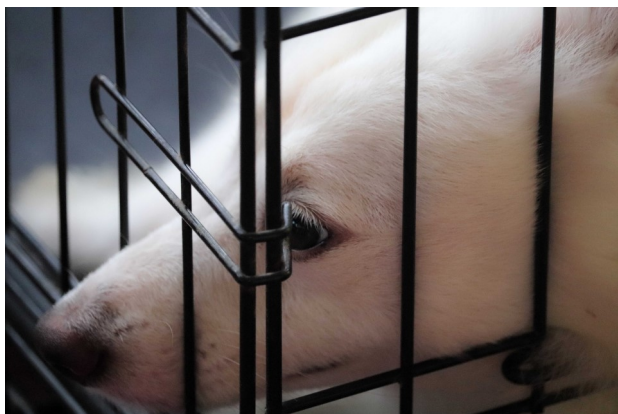


Photo by [Pavan Naik](#) on [Unsplash](#)

Once you get your dog properly crate trained, you will wonder how you and your dog ever lived without it!

Don't take our word for it – start the crate training process with your dog today! If you need any help or guidance on how to start, call the team

Consulting Times

Hillock Lane Surgery

Monday to Friday
8.30am to 7pm

Saturday
8.30am to 1pm



Blackpool Surgery

Monday to Friday
8.30am to 6pm

Why not download our new app, PetsApp. Order medication, book an appointment, ask for advice, sends pictures, pay for products and services and much, much more!

Hillock Lane



Blackpool



Crate Training Your Puppy

Rowan Veterinary Centre

"where pets come first"

**Hillock Lane
Freckleton
Preston
Lancashire
PR4 1TP**

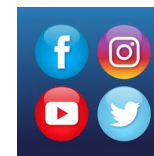
01772 639800

**The Old Bank
369 Whitegate Drive
Blackpool
FY3 9PH**

01253 766352

www.rowanvets.co.uk

admin@rowanvets.co.uk



Why should I crate train?

Many people refuse to crate or kennel-train their dogs because they feel the confinement is cruel.



However, a crate or kennel can give dogs a sense of security. Crate training, done

properly, is a highly effective management system that can be a lifesaver for dog owners. Like any training method, crating can be abused, but using a crate for appropriate time periods is helpful with a variety of important goals, including house training, preventing destructive behaviour, and teaching a dog to settle and relax.

What are the benefits of crate training?

If a dog is taught through positive reinforcement to love the crate, the crate then becomes his own private safe haven, much like a bedroom for a child. The crate or kennel should be located somewhere that your dog can go and not be bothered, which is the perfect solution when your dog is tired or nervous. Puppies need lots of peaceful and uninterrupted rest so it's very important that children are taught and understand not to bother your dog while they are in the crate. Being that dogs are natural den animals, they often will take to a crate very easily with the proper training.



A crate that is sized properly encourages a dog's instinct not to mess where he sleeps. This helps you with toilet training and helps your dog control their bladder, preventing you from cleaning up after them. So, basically the crate is like a super duper house training tool!

Using a crate is a great way to keep your dog from getting into mischief when you can't supervise them directly. If you are busy cooking, doing some work from home, or any other time that your attention is elsewhere, it can be the perfect time for your dog to spend some down time in their crate.

Down time is a great way to train your dog to expect and enjoy time alone and conditions relaxed behaviour. Once your dog is properly trained, they will come to appreciate the time spent in the crate.

What type of crate should I buy?

There are many varieties of crates out there to choose from and it can be a bit overwhelming at first trying to decide on which crate is right for your dog. The best crates to have in your home are usually the plastic or wire crates. These crates are sturdier and are best for long-term confinement. You can consider a different type of crate for use when travelling in your car.

The other thing to consider when choosing a crate for your dog is the size of the crate. Some people are inclined to choose a large crate to give their dog lots of room. However, if you pick a crate that is too large in size, your dog may use a portion of the crate as a toilet.

You want to pick a crate that is just large enough for your dog to stand up, make a complete turn, and lay back down comfortably.

How do I make it a happy place?



Introduce your dog to a crate gradually. Do everything at their pace because forcing your dog too quickly into crate training could backfire. The ultimate goal is to make the crate a happy place for your dog so, how can you do that?

Put some of your dog's favourite items into the

crate. Leave the door open for them to come into and out of in their own time. A great trick is to toss a treat into the crate and allow your dog to go in and get the treat at their own pace.

Place your dog's favourite toys into the crate and allow your dog to go in to retrieve the toys.

At feeding time, place your dog's food bowl in the crate and allow them to eat in their new safe haven.

